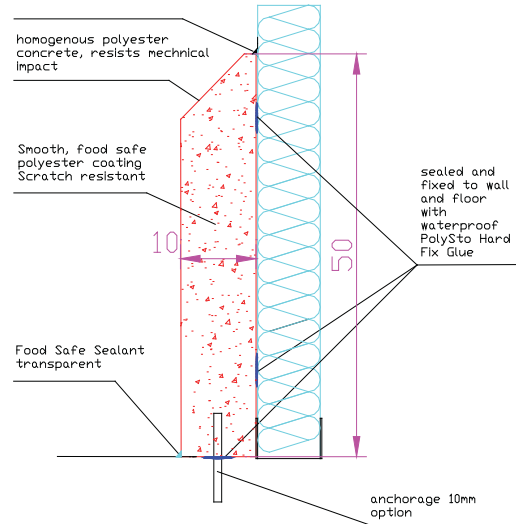




## PolySto IP50R Kerb - Sanicoat

- Hygienic and mechanical protection against heavy transport of wall panels in the food industry
- Protection against water infiltration to the wall panels
- Avoidance of hollow spaces that can contain bacteria
- With rebate for coving the floor finish to obtain the curving

**Application:** protection of panel walls against forklifts in freezers,...



### Specification

PolySto IP50R Sanicoat is a prefabricated kerb 1500x500x100mmH with sloping top. The IP50R Sanicoat kerb consists of a water repellent Polymer Composite mass (Polyester and quartz) and the surface is finished Food Safe with a smooth Sanicoat (Polyester gelcoat). Including matching accessories; prefabricated internal and external corners and endpieces.

Waterproof bonding using PolySto Hard Fix Glue (Hybrid Polymere) with optional chemical anchorage (PolySto Chemfix - 50 mm into the floor and 50 mm into the kerb). Finishing of the joints using PolySto Food Safe Sealant or a 2-component polyurethane mass.

### Technical information

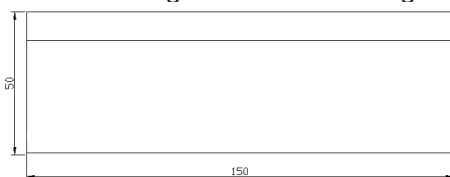
	<u>Plinth</u>	<u>Inner corner</u>	<u>External corner</u>	<u>End piece left / right</u>
Length	150 cm	2 x 50 cm	2 x 50 cm	50 cm
Height	50 cm	50 cm	50 cm	50 cm
Thickness middle	10 cm	10 cm	10 cm	10 cm
Thickness feet	10 cm	10 cm	10 cm	10 cm
Weight	140 kg	94 kg	94 kg	47 kg
Mechanical anchorage (option)	4 pc	4 pc	4 pc	2 pc

### Consumption

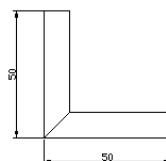
Sealant white	300 cc / m
Sealant transparent	200 cc / m
Hard Fix Glue	700 cc / m
Installation pegs	4 pc / m
Chemical anchorage	100 g / m

### Packing pallet

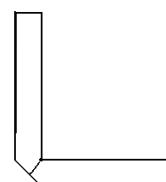
Dimensions	160x105x70cmH
Number of meters / pallet	15 m
Number of endpieces / pallet	6 L & 6 R
Weight	1430 kg



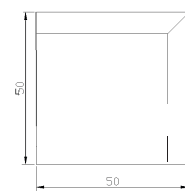
Kerb



Inner corner



External corner



End piece